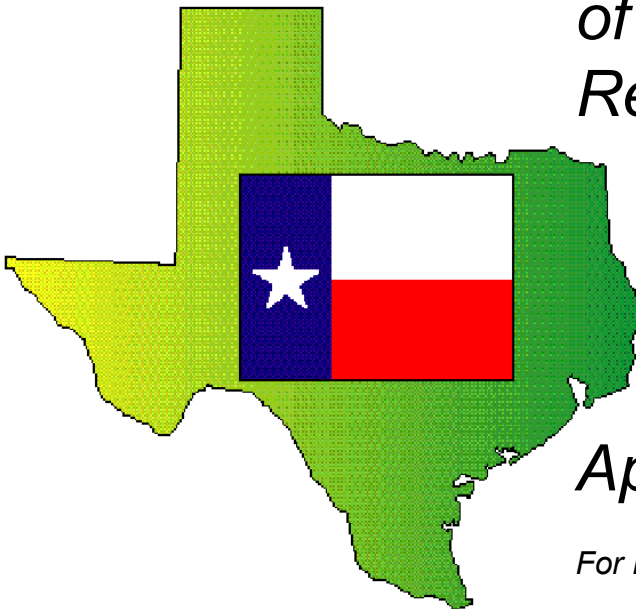


TEXPERS

Report on the Asset Allocation And Investment Performance of Texas Public Employee Retirement Systems

*The Texas Association
of Public Employee
Retirement Systems*



April 2022

For Periods Ending September 30, 2021

Table of Contents

KEY FINDINGS	3
INTRODUCTION	4
TEXPERS COMPOSITE	5
ASSET ALLOCATION	5
INVESTMENT PERFORMANCE	6
INDIVIDUAL PENSION SYSTEMS	7
ASSET ALLOCATION	7
INVESTMENT PERFORMANCE	13
FIVE YEAR RETURN VERSUS STANDARD DEVIATION	14
TEN YEAR RETURN VERSUS STANDARD DEVIATION	15
FIFTEEN YEAR RETURN VERSUS STANDARD DEVIATION	16
TWENTY YEAR RETURN VERSUS STANDARD DEVIATION	17
APPENDIX 1	18
ASSET ALLOCATION AND INVESTMENT PERFORMANCE STUDY OF TEXPERS MEMBERS	18
APPENDIX 2	19
LIST OF TEXPERS SURVEY RESPONDENTS	19
APPENDIX 3	20
RESPONDENT FUND NUMBER – NAME CROSS REFERENCE	20
APPENDIX 4	21
RESPONDENT FUND NUMBER – RETURN ASSUMPTIONS	21

TEXPERS®

Austin Office:

1504 San Antonio St., Austin, Texas 78701

Tel: (713) 622-8018 | e-mail: texpers@texpers.org

Houston Office:

13111 Northwest Freeway, Suite 100, Houston, Texas 77040

Tel: (713) 622-8018 | e-mail: texpers@texpers.org

All rights reserved. The text of this report, or any part, may not be reproduced without written permission from the Texas Association of Public Employee Retirement Systems (TEXPERS®).

©2021, TEXPERS® and the Maples Group

Prepared by:

The Maples Group

Key Findings

Forty participating members contributed data for the fiscal year 2021 Asset Allocation and Investment Performance of Texas Public Employee Retirement Systems, and represented approximately \$26.69 billion in total assets.

- Participating TEXPERS members' FY 2021 dollar-weighted asset allocation (for the fiscal year ending September 30, 2021) was: equities (domestic, international, and global), 52.02%; alternative strategies, 25.54%; fixed income, 23.00%; and short-term securities/cash/other, -0.56%.
- When measuring investment performance for survey respondents as a group over the 20-year period ending September 30, 2021, the respondents' composite investment return was 7.70%, compared to the average actuarial investment return assumption of 7.29%.
- For the trailing 15-year period ending September 30, 2021, survey respondents' 6.85% outperformed the Global 60/40 portfolio return of 6.00% for the same period.
- For the trailing 10-years ending September 30, 2021, survey respondents' 8.86% return outperformed the Global 60/40 portfolio return of 7.99% for the same period.
- Among all TEXPERS members, the weighted average trailing five-year return was 10.02%, and the weighted average trailing three-year return was 10.04%.

Introduction

This report reviews the asset allocation and investment performance for local pension systems that are members of the Texas Association of Public Employee Retirement Systems (TEXPERS) for the trailing one-, three-, five-, 10-, 15- and 20-year periods ending September 30, 2021. Both the aggregate TEXPERS and individual systems' asset allocation as well as investment performance will be examined.

The purpose of this report is to document TEXPERS member systems' diversification with respect to the types of assets invested in, and the investment performance of these systems with respect to their actuarially assumed returns, market benchmarks and other public funds. This will demonstrate that local systems are being managed in compliance with the "prudent expert" rule, which requires that fiduciaries of the system exercise their duties with the care, skill, prudence and diligence under the prevailing circumstances that a prudent person acting in a like capacity and familiar with matters of the type would use in the conduct of an enterprise with a like character and like aims.

Individual pension system data in this report was obtained from a March 2022 survey requesting asset allocation and investment return information from TEXPERS members. A total of sixty-three surveys were sent to TEXPERS members. Forty were completed and returned, a sixty-four percent response rate. The member systems responding represent approximately \$26.69 billion in total assets. A copy of the survey is contained in Appendix 1 and a listing of TEXPERS members responding to the survey is contained in Appendix 2. Respondents who agreed to have their names disclosed in this report are listed in Appendix 3. A listing of actuarial return and inflation assumptions is in Appendix 4.

This year this survey was carried out by the Maples Group, continuing a partnership for this annual reporting.

TEXPERS Composite

Asset Allocation

Figure 1 illustrates the average dollar-weighted* asset allocation of survey respondents as a composite group. The Domestic, International and Global Equity asset classes include investments such as U.S. and Non-U.S. common stocks. Fixed Income includes investments such as government and corporate bonds from domestic and international issuers. Alternative Strategies include private equity, real estate, venture capital, marketable alternative strategies, commodities and Diversified Infrastructure.

Figure 1

Market Value \$26.69 Billion
As of September 30, 2021

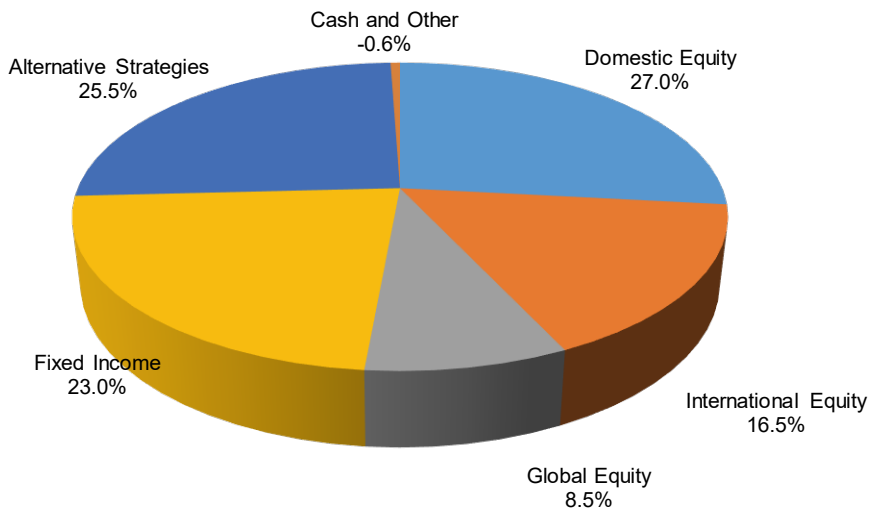
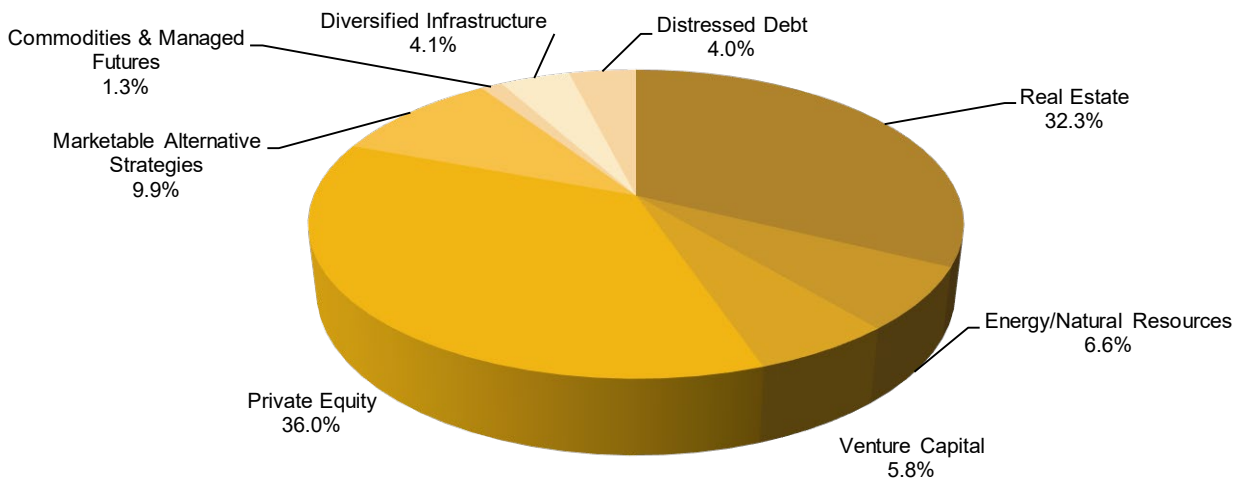


Figure 2

Alternative Strategies Breakout



The asset allocation demonstrates that, in aggregate, the respondents have a level of diversification within the norm for public pension systems.

* Dollar-weighted means that individual responses are weighted according to size of the asset base when calculating the average results – meaning that responses from large participants have a greater impact on average results than those of smaller participants.

Investment Performance

Trailing Period Returns - Table

Table 1

Annualized Returns for the Periods Ending 9/30/2021	One Year	Three Years	Five Years	Ten Years	Fifteen Years	Twenty Years
TEXPERS Weighted Average	21.5	10.1	10.1	8.9	6.9	7.7
Actuarial Assumption*	7.3	7.3	7.3	7.3	7.3	7.3

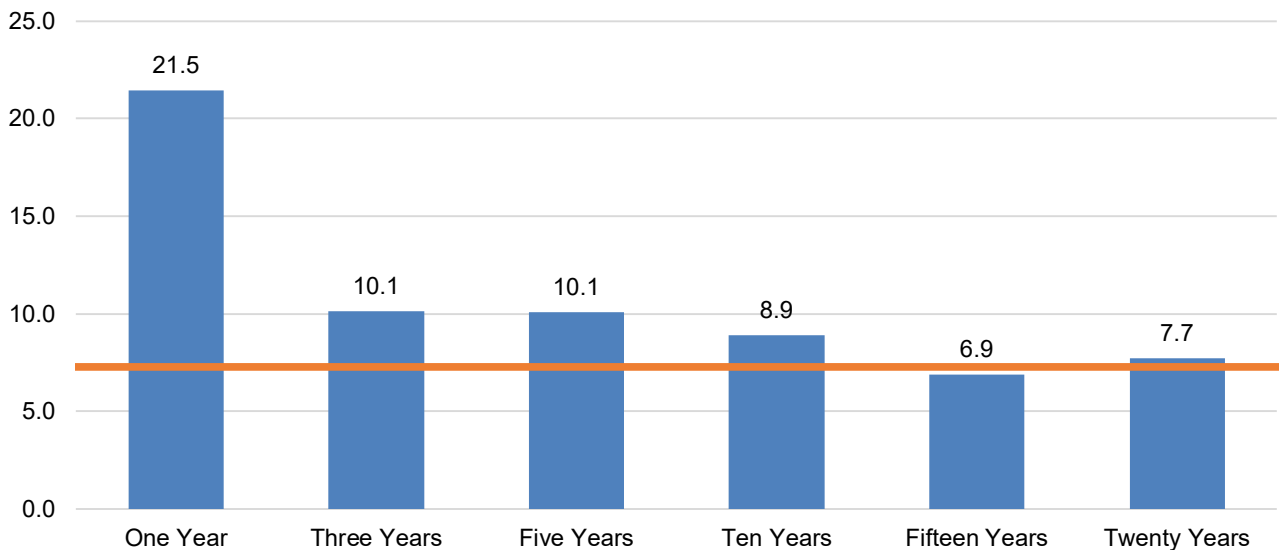
Table 1 and Figure 3 compare the survey respondents' average investment return over the one-, three-, five-, 10-, 15- and 20-year periods ending September 30, 2021 to their average actuarial investment return assumption of 7.3%.

Trailing Period Returns - Chart

Figure 3

Returns vs. Average Actuarial Assumption*

For periods ending September 30, 2021



* This year's actuarial assumption of 7.3% is the average of what was reported among participating TEXPERS members.

Individual Pension Systems

Asset Allocation

Table 2 details percentage allocation to the major asset classes by each survey respondent.

Table 2

	6	8	9	10	11	12	14
Domestic Equity	40.60	1.90	65.40	22.98	35.64	44.60	74.45
Fixed Income	15.60	23.70	25.30	27.61	20.87	25.80	18.26
International Equity	20.10	4.50	6.60	21.92	19.35	14.20	5.11
Global Equity	2.80	37.90	0.00	0.00	0.00	0.00	0.00
Alternative Strategies	20.60	27.80	0.00	15.12	30.00	12.40	0.00
Private Equity	0.10	6.80	0.00	0.00	15.08	2.40	0.00
Marketable Alternative Strategies	14.20	0.00	0.00	8.10	4.34	7.00	0.00
Venture Capital	0.00	0.00	0.00	0.00	0.19	0.00	0.00
Real Estate	0.00	11.80	0.00	7.02	8.54	3.00	0.00
Commodities & Managed Futures	0.00	0.00	0.00	0.00	0.00	0.00	0.00
Energy/Natural Resources	5.30	6.10	0.00	0.00	1.85	0.00	0.00
Diversified Infrastructure	0.00	2.80	0.00	0.00	0.00	0.00	0.00
Distressed Debt	1.00	0.30	0.00	0.00	0.00	0.00	0.00
Cash and Other	0.30	4.20	2.70	12.37	-5.86	3.00	2.18
Cash, Money Market, Treasuries	0.30	4.20	0.00	12.37	-5.86	3.00	2.18
Other	0.00	0.00	0.00	0.00	0.00	0.00	0.00

Individual Pension Systems

Asset Allocation

Table 2 - continued

	15	16	17	18	20	23	25
Domestic Equity	54.40	25.79	38.61	52.20	38.40	7.60	19.10
Fixed Income	11.40	35.74	28.47	24.30	33.70	19.10	27.50
International Equity	14.50	21.53	14.67	15.80	19.30	11.30	20.80
Global Equity	0.00	0.00	0.00	0.00	0.00	24.00	0.00
Alternative Strategies	17.70	15.51	15.97	5.50	8.60	36.30	31.80
Private Equity	6.40	2.58	0.00	0.00	0.00	11.50	21.40
Marketable Alternative Strategies	0.00	0.00	15.97	4.80	0.00	9.40	0.00
Venture Capital	0.00	0.00	0.00	0.00	0.00	1.10	0.00
Real Estate	11.30	11.70	0.00	0.70	8.60	11.20	7.90
Commodities & Managed Futures	0.00	0.00	0.00	0.00	0.00	2.90	0.00
Energy/Natural Resources	0.00	1.24	0.00	0.00	0.00	0.00	2.50
Diversified Infrastructure	0.00	0.00	0.00	0.00	0.00	0.00	0.00
Distressed Debt	0.00	0.00	0.00	0.00	0.00	0.20	0.00
Cash and Other	2.00	1.42	2.28	2.20	0.00	1.70	0.80
Cash, Money Market, Treasuries	0.00	1.42	2.28	2.20	0.00	1.70	0.00
Other	0.00	0.00	0.00	0.00	0.00	0.00	0.00

Individual Pension Systems

Asset Allocation

Table 2 - continued

	26	27	28	29	31	36	38
Domestic Equity	47.20	39.60	39.43	18.70	31.41	46.81	27.80
Fixed Income	26.30	30.60	27.51	27.40	20.22	24.19	25.30
International Equity	15.10	29.40	15.39	12.76	26.91	20.30	20.30
Global Equity	0.00	0.00	0.00	19.44	0.00	0.00	0.00
Alternative Strategies	10.40	0.00	16.24	20.97	21.16	8.41	25.60
Private Equity	0.00	0.00	0.00	0.00	13.85	0.00	7.20
Marketable Alternative Strategies	0.00	0.00	16.24	0.00	0.00	0.00	0.80
Venture Capital	0.00	0.00	0.00	8.70	0.00	0.00	0.00
Real Estate	5.70	0.00	0.00	6.63	7.31	8.41	7.50
Commodities & Managed Futures	0.00	0.00	0.00	0.00	0.00	0.00	0.00
Energy/Natural Resources	0.00	0.00	0.00	0.00	0.00	0.00	3.70
Diversified Infrastructure	4.70	0.00	0.00	5.64	0.00	0.00	0.00
Distressed Debt	0.00	0.00	0.00	0.00	0.00	0.00	6.40
Cash and Other	1.00	0.40	1.43	0.73	0.30	0.30	1.00
Cash, Money Market, Treasuries	1.00	0.40	1.43	0.73	0.30	0.30	1.00
Other	0.00	0.00	0.00	0.00	0.00	0.00	0.00

Individual Pension Systems

Asset Allocation

Table 2 - continued

	39	43	44	48	49	52	56
Domestic Equity	33.72	16.30	37.96	43.00	47.50	39.76	48.50
Fixed Income	31.10	20.70	28.04	33.00	32.60	20.62	18.70
International Equity	19.88	0.00	15.01	19.00	11.40	26.83	21.00
Global Equity	0.00	40.20	0.00	0.00	0.00	0.00	0.00
Alternative Strategies	14.99	22.30	16.70	3.00	7.00	11.74	11.20
Private Equity	0.00	4.30	0.00	0.00	0.00	2.58	2.40
Marketable Alternative Strategies	7.20	0.00	16.70	0.00	0.00	6.11	6.40
Venture Capital	0.00	3.10	0.00	0.00	0.00	0.00	0.00
Real Estate	7.79	11.70	0.00	3.00	1.00	3.05	2.40
Commodities & Managed Futures	0.00	0.00	0.00	0.00	6.00	0.00	0.00
Energy/Natural Resources	0.00	2.30	0.00	0.00	0.00	0.00	0.00
Diversified Infrastructure	0.00	0.00	0.00	0.00	0.00	0.00	0.00
Distressed Debt	0.00	0.90	0.00	0.00	0.00	0.00	0.00
Cash and Other	0.31	0.50	2.29	2.00	1.50	1.05	0.60
Cash, Money Market, Treasuries	0.31	0.50	2.29	2.00	1.50	1.05	0.60
Other	0.00	0.00	0.00	0.00	0.00	0.00	0.00

Individual Pension Systems

Asset Allocation

Table 2 - continued

	57	58	59	61	62	63	73
Domestic Equity	42.40	37.15	49.80	36.33	51.36	45.00	41.80
Fixed Income	26.50	28.40	32.70	29.27	34.01	26.10	45.80
International Equity	15.30	15.22	15.80	15.70	13.89	15.00	7.40
Global Equity	0.00	0.00	0.00	0.00	0.00	0.00	0.00
Alternative Strategies	13.60	16.51	0.00	16.91	0.00	13.40	0.00
Private Equity	7.70	0.00	0.00	0.00	0.00	0.00	0.00
Marketable Alternative Strategies	0.00	16.51	0.00	16.91	0.00	6.00	0.00
Venture Capital	0.00	0.00	0.00	0.00	0.00	0.00	0.00
Real Estate	5.90	0.00	0.00	0.00	0.00	7.40	0.00
Commodities & Managed Futures	0.00	0.00	0.00	0.00	0.00	0.00	0.00
Energy/Natural Resources	0.00	0.00	0.00	0.00	0.00	0.00	0.00
Diversified Infrastructure	0.00	0.00	0.00	0.00	0.00	0.00	0.00
Distressed Debt	0.00	0.00	0.00	0.00	0.00	0.00	0.00
Cash and Other	2.20	2.71	1.70	1.79	0.74	0.50	5.00
Cash, Money Market, Treasuries	2.20	2.71	1.70	1.79	0.74	0.50	0.10
Other	0.00	0.00	0.00	0.00	0.00	0.00	4.90

Individual Pension Systems

Asset Allocation

Table 2 - continued

	77	81	82	84	85
Domestic Equity	64.53	51.80	55.80	60.70	50.25
Fixed Income	24.94	40.08	21.10	22.20	31.00
International Equity	9.52	7.57	14.40	7.20	16.75
Global Equity	0.00	0.00	0.00	0.00	0.00
Alternative Strategies	0.00	0.00	7.60	8.50	0.00
Private Equity	0.00	0.00	0.00	0.00	0.00
Marketable Alternative Strategies	0.00	0.00	0.00	0.00	0.00
Venture Capital	0.00	0.00	0.00	8.50	0.00
Real Estate	0.00	0.00	7.60	0.00	0.00
Commodities & Managed Futures	0.00	0.00	0.00	0.00	0.00
Energy/Natural Resources	0.00	0.00	0.00	0.00	0.00
Diversified Infrastructure	0.00	0.00	0.00	0.00	0.00
Distressed Debt	0.00	0.00	0.00	0.00	0.00
Cash and Other	1.01	0.55	1.10	1.40	2.00
Cash, Money Market, Treasuries	1.01	0.00	1.10	1.40	2.00
Other	0.00	0.00	0.00	0.00	0.00

Investment Performance

Table 3 lists investment returns* for survey respondents over the one-, three-, five-, 10-, 15- and 20-year periods ending September 30, 2021. For comparison purposes the benchmark of 60% of the MSCI ACWI equity index and 40% of the Bloomberg Barclays Global Aggregate fixed income index is represented by the "Index".

Table 3

Fund	1 Year	3 Years	5 Years	10 Years	15 Years	20 Years
6	26.17%	10.64%	10.27%	9.19%	6.61%	6.63%
8	8.15%	3.85%	3.77%	3.26%	3.61%	5.59%
9	20.61%	8.95%	7.60%	n/a	n/a	n/a
10	14.66%	5.32%	7.13%	7.71%	6.19%	6.42%
11	27.86%	12.28%	12.51%	9.75%	7.77%	8.50%
12	23.46%	9.68%	9.56%	7.62%	5.79%	5.14%
14	23.98%	14.23%	14.59%	n/a	n/a	n/a
15	22.54%	10.25%	9.61%	n/a	n/a	n/a
16	14.57%	7.18%	8.75%	9.22%	6.88%	7.27%
17	18.13%	8.73%	8.36%	8.52%	6.25%	n/a
18	21.96%	10.42%	9.98%	9.66%	7.33%	8.30%
20	17.68%	9.30%	9.19%	9.61%	7.27%	7.49%
23	22.41%	n/a	n/a	n/a	n/a	n/a
25	0.00%	n/a	n/a	n/a	n/a	n/a
26	8.23%	17.34%	15.21%	11.55%	8.20%	n/a
27	19.14%	10.91%	10.44%	9.36%	7.52%	n/a
28	18.21%	8.96%	8.48%	8.61%	5.36%	n/a
29	21.74%	8.45%	8.52%	9.34%	6.73%	7.82%
31	25.39%	11.25%	10.94%	10.10%	7.69%	8.63%
36	20.75%	9.93%	10.95%	10.50%	7.86%	n/a

Fund	1 Year	3 Years	5 Years	10 Years	15 Years	20 Years
38	21.46%	9.94%	9.60%	8.87%	6.50%	6.91%
39	17.83%	n/a	n/a	n/a	n/a	n/a
43	17.93%	9.46%	9.35%	8.32%	6.85%	7.18%
44	18.08%	9.02%	8.45%	8.61%	6.38%	7.49%
48	15.69%	10.68%	8.80%	8.22%	6.27%	7.42%
49	21.82%	10.05%	10.02%	n/a	n/a	n/a
52	20.95%	11.76%	10.46%	9.04%	6.67%	7.18%
56	18.08%	13.86%	12.16%	10.01%	n/a	n/a
57	19.94%	n/a	n/a	n/a	n/a	n/a
58	17.85%	n/a	n/a	n/a	n/a	n/a
59	22.37%	9.96%	9.26%	8.97%	n/a	n/a
61	18.76%	n/a	n/a	n/a	n/a	n/a
62	18.15%	10.69%	10.82%	n/a	n/a	n/a
63	18.64%	11.21%	10.51%	n/a	n/a	n/a
73	19.82%	n/a	n/a	n/a	n/a	n/a
77	22.20%	8.34%	8.48%	n/a	n/a	n/a
81	19.27%	8.89%	8.96%	n/a	n/a	n/a
82	24.73%	n/a	n/a	n/a	n/a	n/a
85	14.74%	7.49%	6.81%	7.22%	5.35%	n/a
Index	15.49%	9.55%	8.83%	7.99%	6.00%	6.87%

*All investment returns are net-of-fee, except for Fund 14 and Fund 25 that reported only gross returns.

Five Year Return versus Standard Deviation

Figure 4

For the Five Years Ending September 30, 2021

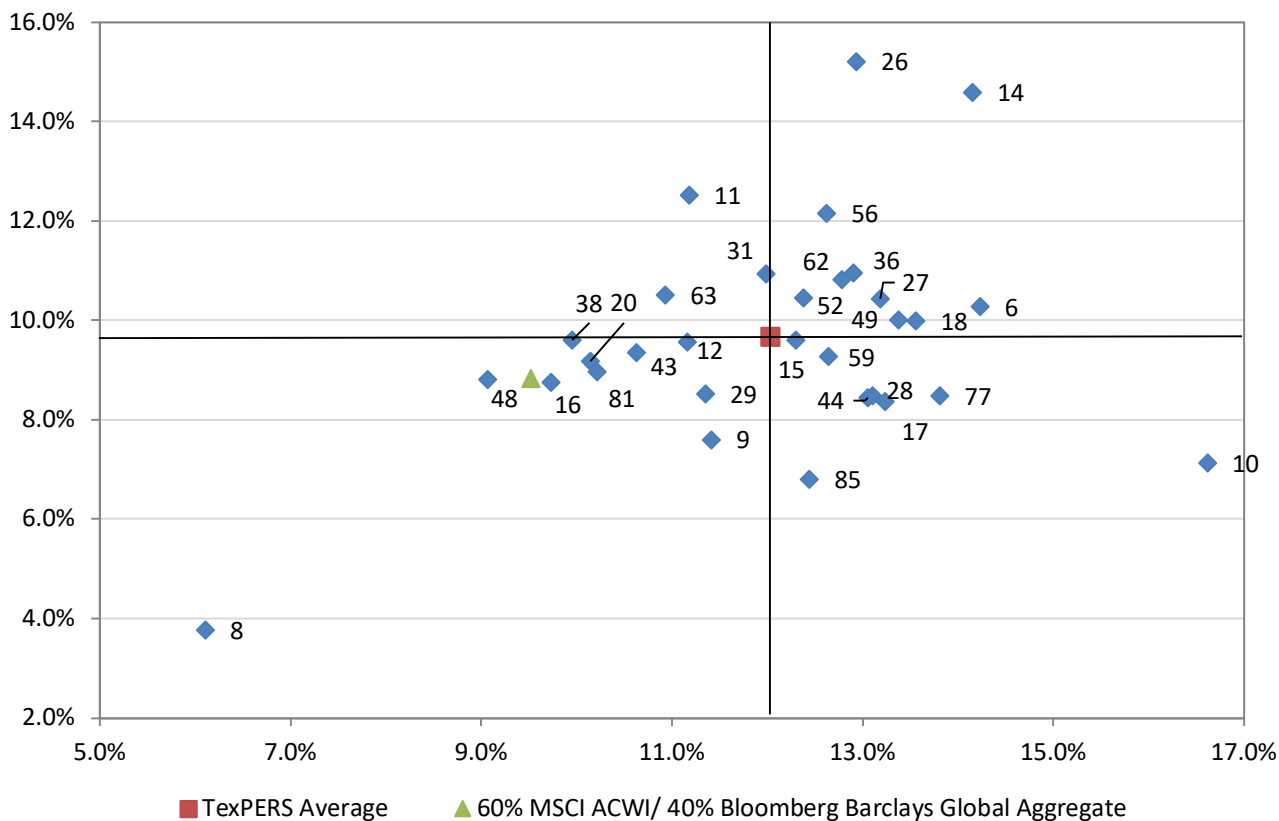


Figure 4 shows the five-year return and standard deviation characteristics of the individual TEXPERS survey respondents versus two benchmarks. The first benchmark defines the four quadrants and is the TEXPERS average five-year return, representing the average return of the respondents to this survey. The second benchmark is a combination of 60% of the MSCI ACWI equity index and 40% of the Bloomberg Barclays Global Aggregate fixed income index. Annualized return and standard deviation are based on quarterly returns for the period. Standard deviation is a measure of the dispersion or volatility of the quarterly returns around their average value.

The points representing the performance of the TEXPERS survey respondents are located in four quadrants of the chart. Three of the respondents are located in the most desirable northwest quadrant, indicating higher returns with less standard deviation than the benchmark. Twenty respondents are located in the northeast or southwest quadrants, indicating reasonable return versus standard deviation trade-offs. That is, they have either a higher return with a higher standard deviation, or a lower return with a lower standard deviation, than the benchmark. Eight respondents are located in the least desirable southeast quadrant, where return is lower and standard deviation is higher than the benchmark.

Ten Year Return versus Standard Deviation

Figure 5

For the Ten Years Ending September 30, 2021

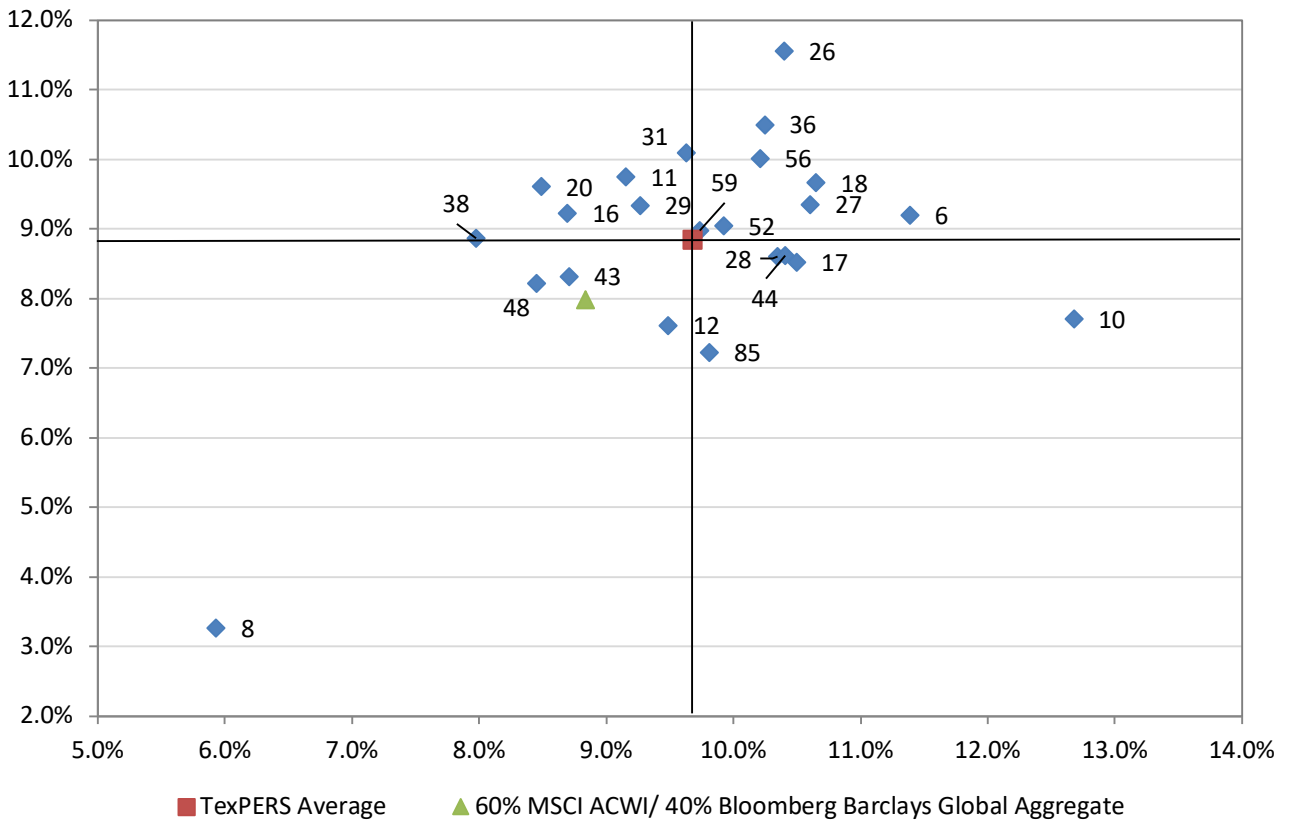


Figure 5 shows 10-year return and standard deviation characteristics of individual TEXPERS survey respondents versus two benchmarks. The first benchmark defines the four quadrants and is the TEXPERS average 10-year return, representing the average return of the respondents to this survey. The second benchmark is a combination of 60% of the MSCI ACWI equity index and 40% of the Bloomberg Barclays Global Aggregate fixed income index. Annualized return and standard deviation are based on quarterly returns for the period. Standard deviation is a measure of the dispersion or volatility of the quarterly returns around their average value.

The points representing the performance of the TEXPERS survey respondents are located in four quadrants of the chart. Six of the respondents are located in the most desirable northwest quadrant, indicating higher returns with less standard deviation than the benchmark. Twelve respondents are located in the northeast or southwest quadrants, indicating reasonable return versus standard deviation trade-offs. That is, they have either a higher return with a higher standard deviation, or a lower return with a lower standard deviation, than the benchmark. Five respondents are located in the least desirable southeast quadrant, where return is lower and standard deviation is higher than the benchmark.

Fifteen Year Return versus Standard Deviation

Figure 6

For the Fifteen Years Ending September 30, 2021

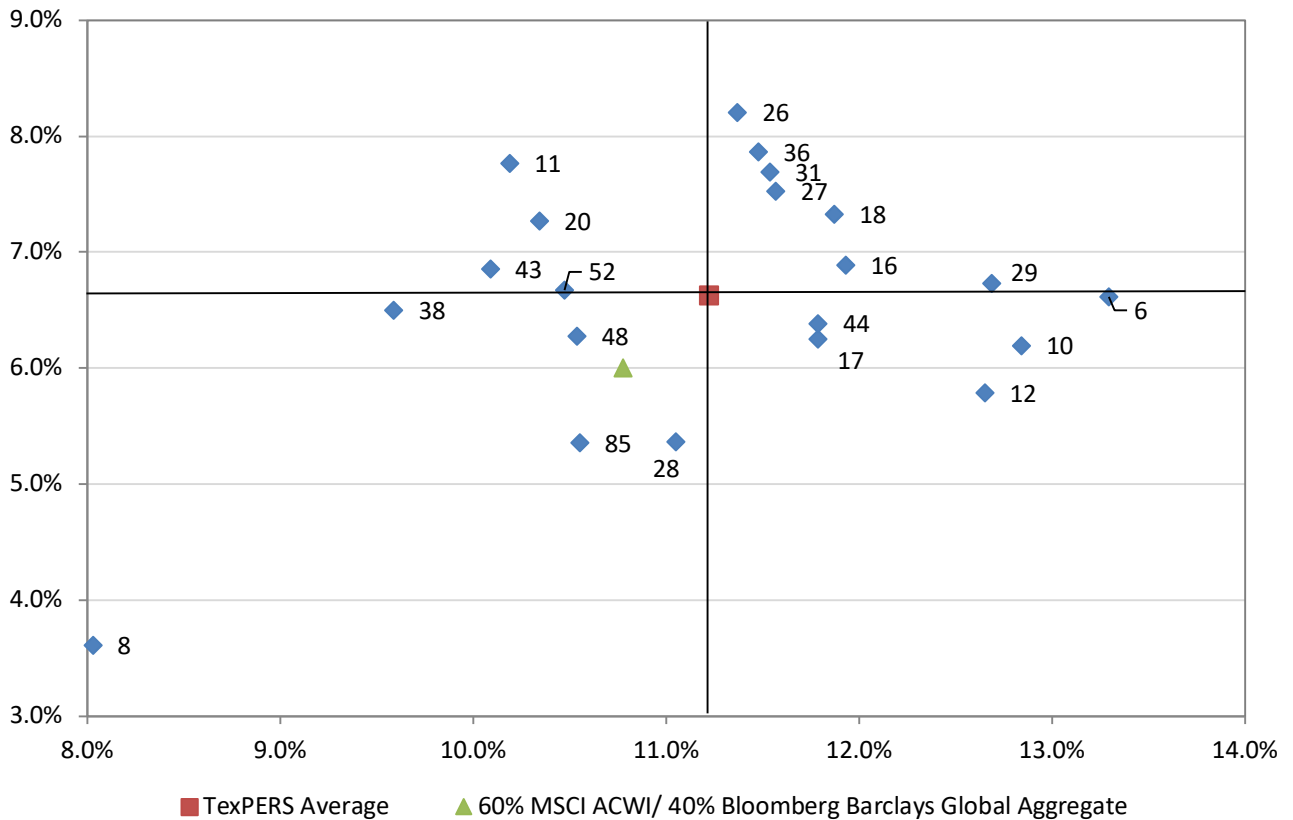


Figure 6 shows 15-year return and standard deviation characteristics of individual TEXPERS survey respondents versus two benchmarks. The first benchmark defines the four quadrants and is the TEXPERS average 15-year return, representing the average return of the respondents to this survey. The second benchmark is a combination of 60% of the MSCI ACWI equity index and 40% of the Bloomberg Barclays Global Aggregate fixed income index. Annualized return and standard deviation are based on quarterly returns for the period. Standard deviation is a measure of the dispersion or volatility of the quarterly returns around their average value.

The points representing the performance of the TEXPERS survey respondents are located in all four quadrants of the chart. Four respondents is located in the most desirable northwest quadrant, indicating higher returns with less standard deviation than the benchmark. Twelve respondents are located in the northeast or southwest quadrants, indicating reasonable return versus standard deviation trade-offs. That is, they have either a higher return with a higher standard deviation, or a lower return with a lower standard deviation, than the benchmark. Five respondents are located in the least desirable southeast quadrant, where return is lower and standard deviation is higher than the benchmark.

Twenty Year Return versus Standard Deviation

Figure 7

For the Twenty Years Ending September 30, 2021

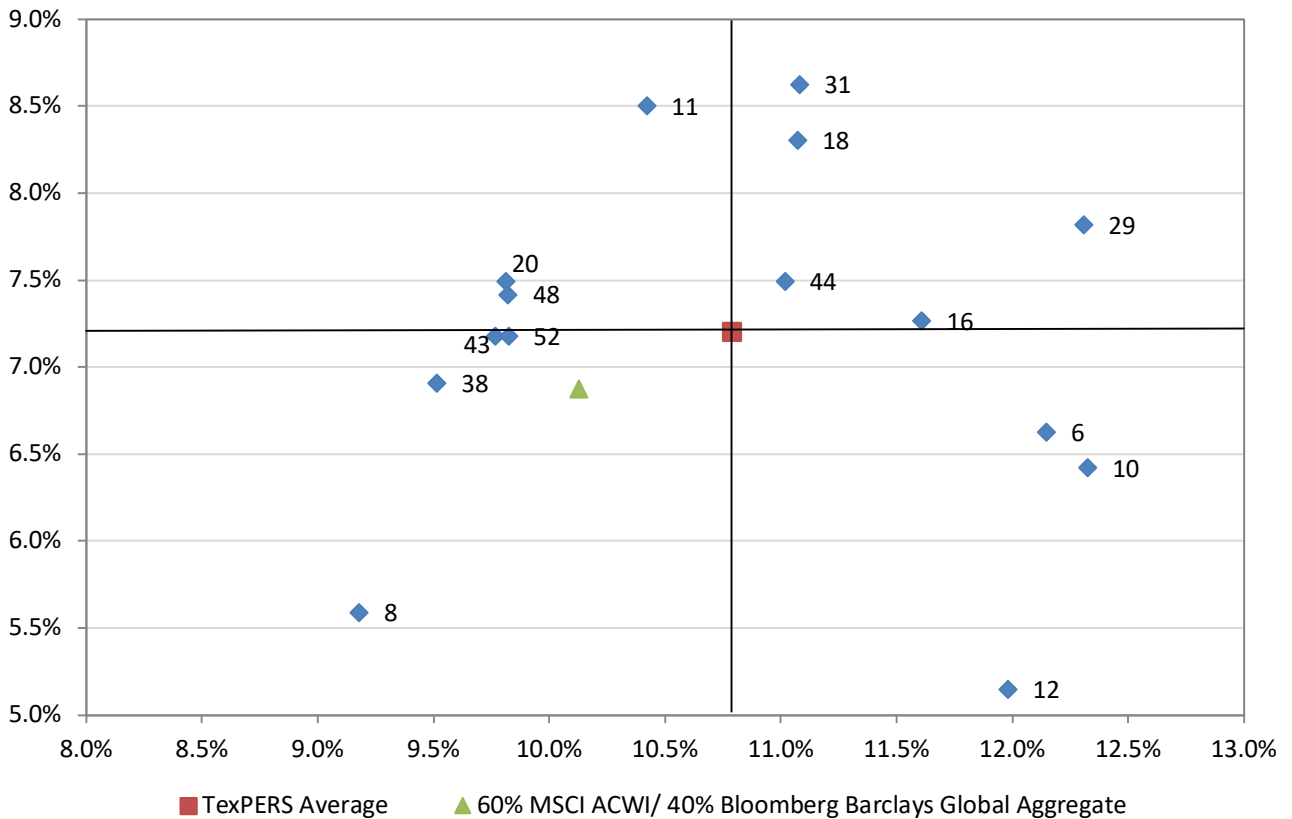


Figure 7 shows 20-year return and standard deviation characteristics of individual TEXPERS survey respondents versus two benchmarks. The first benchmark defines the four quadrants and is the TEXPERS average 20-year return, representing the average return of the respondents to this survey. The second benchmark is a combination of 60% of the MSCI ACWI equity index and 40% of the Bloomberg Barclays Global Aggregate fixed income index. Annualized return and standard deviation are based on quarterly returns for the period. Standard deviation is a measure of the dispersion or volatility of the quarterly returns around their average value.

The points representing the performance of the TEXPERS survey respondents are located in all four quadrants of the chart. Three respondents are located in the most desirable northwest quadrant, indicating higher returns with less standard deviation than the benchmark. Nine respondents are located in the northeast or southwest quadrants, indicating reasonable return versus standard deviation trade-offs. That is, they have either a higher return with a higher standard deviation, or a lower return with a lower standard deviation, than the benchmark. Three respondents are located in the least desirable southeast quadrant, where return is lower and standard deviation is higher than the benchmark.

Appendix 1

Asset Allocation and Investment Performance Study of TEXPERS Members

TEXPERS 2021 SURVEY		
Name of Plan		
Total Plan Rates of Return (%)		
Quarter Ending	Gross Return (if available)	Net Return
September 30, 2021		
June 30, 2021		
March 31, 2021		
December 31, 2020		
Actuarial Investment Return Assumption (%)		
Inflation Assumption (%)		
Total Fund Value (\$)		
Asset Allocation (total should equal 100%)		
	Percentage Invested at 09/30/2021	
Domestic Equities		
Total Domestic Equities	0.00%	
Active (Include REITs)		
Index (Passive/Enhanced)		
Multi-Strategy Equity Fund		
International Equities		
Total International Equities	0.00%	
Active MSCI EAFE®		
Passive/Index MSCI EAFE®		
Emerging Markets		
Global Equities		
Total Global Equities	0.00%	
Active MSCI AC World®		
Passive/Index MSCI AC World®		
Fixed Income		
Total Fixed Income	0.00%	
Domestic (U.S.) Investment Grade (Active) (Include TIPS)		
Domestic (U.S.) Investment Grade (Passive)		
Domestic (U.S.) Non-Investment Grade (Active or Passive)		
International (Non-U.S.) Investment Grade (Active or Passive)		
Emerging Markets (Active or Passive)		
Multi-Strategy Bond Fund		
Other Credit Strategies		
Alternative Strategies		
Total Alternative Strategies	0.00%	
Real Estate (excl REITs)		
Venture Capital		
Private Equity (LBOs, Mezzanine, M&A Funds)		
Commodities & Managed Futures		
Marketable Alternative Strategies (Hedge Funds, Derivatives)		
Energy/Natural Resources		
Diversified Infrastructure		
Distressed Debt		
Cash and Other		
Total Cash and Other	0.00%	
Cash, Money Market, Treasuries		
Other (Please Specify Below)		
TOTAL	0.00%	
Ok to identify your fund by name in the annual performance report? (Y/N)		

Appendix 2

List of TEXPERS Survey Respondents

Laredo Firefighters Retirement System	San Antonio Fire & Police Pension Fund
Dallas Police & Fire Pension System	Texas Emergency Services Retirement System
Conroe Firefighter Relief & Retirement Fund	Lubbock Fire Pension Fund
Waxahachie Firefighter's Relief & Retirement Fund	Sweetwater Firemen's Relief & Retirement Fund
Houston Police Officers' Pension System	Texarkana Firemen's Relief & Retirement Fund
Longview Firefighters' Relief & Retirement Fund	Tyler Firefighter's Relief & Retirement Fund
Amarillo Firemen's Relief & Retirement Fund	Temple Fire Fighter's Relief & Retirement Fund
Austin Police Retirement System	Galveston Firefighter's Pension Fund
Irving Firemen's Relief & Retirement Fund	Killeen Firefighter's Relief & Retirement Fund
Marshall Firemen's Relief & Retirement Fund	Paris Firefighters' Relief & Retirement Fund
Big Spring Firemen's Relief & Retirement Fund	Port Arthur Firemen's Relief & Retirement Fund
Corpus Christi Firefighters' Retirement System	Texas City Firemen's Relief & Retirement Fund
Fort Worth Employees' Retirement Fund	Travis County ESD#6 Firefighters' R & R Fund
Austin Firefighters Relief & Retirement Fund	Wichita Falls Firemen's Relief & Retirement Fund
Beaumont Firemen's Relief & Retirement Fund	Port of Houston Authority
Brownwood Firemen's Relief & Retirement Fund	Weslaco Firemen's Relief & Retirement Fund
Lufkin Firemen's Relief & Retirement Fund	San Benito Firemen Relief and Retirement Fund
Dallas Employees' Retirement Fund	Woodland Firefighters' Retirement System
El Paso Firemen & Policemen's Pension Fund	City of Galveston Employees Retirement Fund
Plano Retirement Security Plan	Galveston Retirement Plan for Police
Laredo Firefighters Retirement System	San Antonio Fire & Police Pension Fund

Appendix 3

Respondent Fund Number – Name Cross Reference

Number	Name
14	Amarillo Firemen's Relief & Retirement Fund
25	Austin Firefighters Relief & Retirement Fund
26	Beaumont Firemen's Relief & Retirement Fund
18	Big Spring Firemen's Relief & Retirement Fund
84	City of Galveston Employees Retirement Fund
20	Corpus Christi Firefighters' Retirement System
8	Dallas Police & Fire Pension System
31	El Paso Firemen & Policemen's Pension Fund
23	Fort Worth Employees' Retirement Fund
56	Galveston Firefighter's Pension Fund
85	Galveston Retirement Plan for Police
11	Houston Police Officers' Pension System
16	Irving Firemen's Relief & Retirement Fund
57	Killeen Firefighter's Relief & Retirement Fund
6	Laredo Firefighters Retirement System
12	Longview Firefighters' Relief & Retirement Fund
43	Lubbock Fire Pension Fund
28	Lufkin Firemen's Relief & Retirement Fund
17	Marshall Firemen's Relief & Retirement Fund
58	Paris Firefighters' Relief & Retirement Fund
59	Port Arthur Firemen's Relief & Retirement Fund
73	Port of Houston Authority
38	San Antonio Fire & Police Pension Fund
44	Sweetwater Firemen's Relief & Retirement Fund
48	Texarkana Firemen's Relief & Retirement Fund
61	Texas City Firemen's Relief & Retirement Fund
62	Travis County ESD#6 Firefighters' R & R Fund
49	Tyler Firefighter's Relief & Retirement Fund
77	Weslaco Firemen's Relief & Retirement Fund
63	Wichita Falls Firemens Relief & Retirement Fund
82	Woodland Firefighters' Retirement System

Appendix 4

Respondent Fund Number – Return Assumptions

Fund	Nominal	Inflation	Real
14	7.50%	2.50%	5.00%
25	7.30%	2.50%	4.80%
15	7.25%	2.50%	4.75%
26	7.50%	3.00%	4.50%
18	7.75%	3.50%	4.25%
27	7.00%	3.00%	4.00%
84	7.50%	2.50%	5.00%
20	7.25%	2.75%	4.50%
9	7.50%	2.50%	5.00%
29	7.25%	2.50%	4.75%
8	6.50%	2.50%	4.00%
31	7.75%	3.00%	4.75%
23	7.00%	2.50%	4.50%
56	7.50%	2.85%	4.65%
85	7.00%	0.00%	7.00%
11	7.00%	2.30%	4.70%
16	7.00%	2.75%	4.25%
57	7.25%	2.75%	4.50%
6	7.50%	0.00%	7.50%
12	7.50%	3.00%	4.50%

Fund	Nominal	Inflation	Real
43	7.50%	2.50%	5.00%
28	7.25%	2.75%	4.50%
17	7.25%	3.75%	3.50%
58	7.25%	2.70%	4.55%
36	6.75%	2.50%	4.25%
59	7.50%	3.00%	4.50%
73	6.25%	2.20%	4.05%
38	7.25%	3.00%	4.25%
81	7.50%	2.50%	5.00%
44	8.00%	3.00%	5.00%
52	7.75%	3.75%	4.00%
48	7.60%	3.00%	4.60%
61	7.25%	2.75%	4.50%
39	7.50%	3.00%	4.50%
62	6.50%	2.75%	3.75%
49	7.50%	3.40%	4.10%
10	7.00%	2.00%	5.00%
77	7.25%	3.25%	4.00%
63	7.75%	3.00%	4.75%
82	7.00%	0.00%	7.00%